

Swiss-AL: Language Data Platform for Applied Sciences

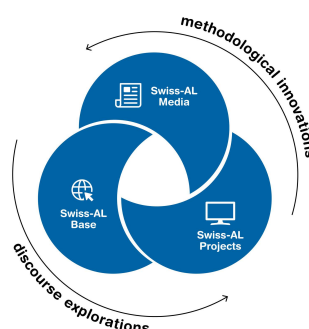
Language data is used not only by linguists, but also in many other research disciplines. In the Swiss-AL project, we aim to develop practices for a diverse community interested in exploring the potential of language data while implementing FAIR data management principles and integrating them into the Swiss-AL workbench, a browser-based analysis tool for multilingual text corpora.

Swiss-AL



- Swiss-AL is a platform designed for the analysis of multilingual corpora derived from Swiss public communication.
- It contains Swiss journalistic media, media releases, news reports and blog posts from players in the worlds of politics and administration, industry, academia and civil society.
- A flexible processing pipeline enables the creation of tailor-made sub-corpora for analyzing and simulating public discourses.

Swiss-AL Family of Corpora

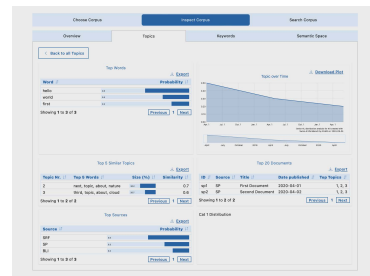
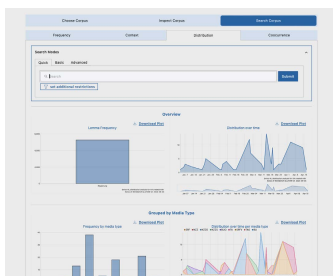
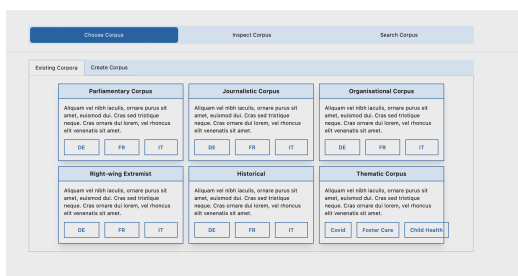


Swiss-AL Media
Journalistic Media
DE / IT / FR / RM
Based on Swiss Media Database

Swiss-AL Base
politics & administration,
science, industry, civil society
and journalistic media
DE / IT / FR
Based on webfiles and Swiss Media Database

Swiss-AL Projects
research projects
DE / IT / FR / EN
Based on Swiss-AL Base, Swiss-AL Media,
additional actions and sources

Swiss-AL Workbench (Test Frontend)



Challenges Related to Linguistic Open Research Data

- The use of language data by an interdisciplinary research community whose members use **heterogeneous practices** in dealing with such data (e.g., qualitative content analysis, distant reading methods)
- The need to make **open research data** and associated infrastructures **flexible and expandable** and to ensure their continuous growth
- Legal challenges related to providing and using language data posed by the **current data and copyright law**

Contact

Project Website

<https://www.zhaw.ch/en/linguistics/research/swiss-al-linguistic-open-research-data-practices-for-applied-sciences/>



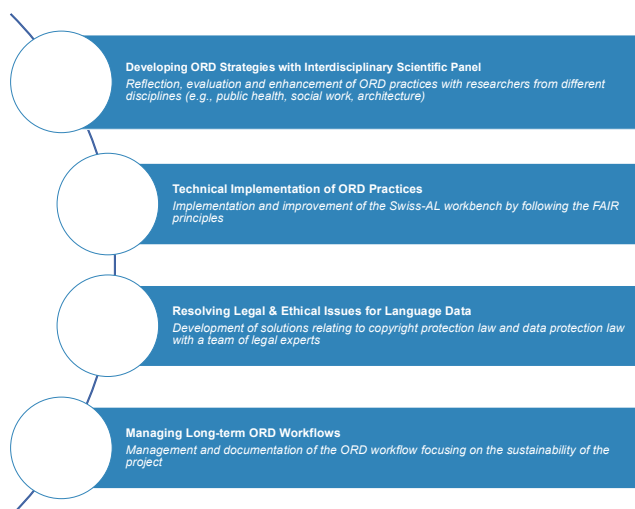
Project Team

Julia Krasselt, Philipp Dreesen, Peter Stücheli-Herlach, Matthias Fluor, Klaus Rothenhäusler, Dolores Lemmenmeier, Sooyeon Cho, Simon van Rekum, Jennifer Gewinner

E-mail: korpusinguistik@zhaw.ch

Swiss-AL is operated by the ZHAW Digital Discourse Lab.

Steps towards Implementation of ORD Practices in Swiss-AL



Further Reading

Krasselt, J., Fluor, M., Rothenhäusler, K., & Dreesen, P. (2021). A workbench for corpus linguistic discourse analysis. In D. Gromann, G. Sérasset, T. Declerck, J. P. McCrae, J. Gracia, J. Bosque-Gil, F. Bobillo, & B. Heinisch (Hrsg.), 3rd conference on language, data and knowledge (LDK 2021) (Bd. 93, S. 26:1-26:9). Schloss Dagstuhl – Leibniz-Zentrum für Informatik. <https://doi.org/10.4230/OASfcs.LDK.2021.26>

Krasselt, J., Dreesen, P., Fluor, M., Mahlow, C., Rothenhäusler, K., & Runte, M. (2020). Swiss-AL: A Multilingual Swiss Web Corpus for Applied Linguistics. Proceedings of the 12th Language Resources and Evaluation Conference, 4138–4144. <https://aclanthology.org/2020.lrec-1.510/>